



Power monitoring made simple

Power monitoring devices and software from the SENTRON portfolio

- Ease of operation and visualization
- Scalability
- Cyber Security
- Various communication protocols

www.siemens.com/powermonitoring

SIEMENS

Energy Management System

(A) Hardware Solutions

Complete Range of Power Monitoring Devices for LV and HV Networks



Description	Type
PAC 3120 with integrated RS 485 port for MODBUS RTU Class 0.5 accuracy, screw terminals AC/DC wide voltage power supply 100 ... 250 V ±10% 50/60Hz	7KM3120-0BA01-1DA0#
PAC 3220 with integrated dual ethernet port for MODBUS TCP Class 0.5 accuracy, screw terminals With AC/DC wide voltage power supply 100 ... 250 V ±10% 50/60Hz	7KM3220-0BA01-1DA0#
PAC 4200 with integrated ethernet port for MODBUS TCP Class 0.2s accuracy, screw terminals With AC/DC wide voltage power supply 95...240V AC ±10%, 50/60Hz, 110...340V DC ±10%	7KM4212-0BA00-3AA0#

Expansion Modules (for PAC3220 and PAC4200)

Description	Type
PROFIBUS DP expansion module	7KM9300-0AB01-0AA0
RS485 expansion module for MODBUS RTU	7KM9300-0AM00-0AA0
Switched Ethernet PROFINET V3 expansion module	7KM9300-0AE02-0AA0
Digital Expansion Module 4DI/2DO ⁵	7KM9200-0AB00-0AA0
Analog Expansion Module	7KM9200-0AD00-0AA0

For extra low DC voltage (22 ... 65 V DC ± 10 %) option, please contact your nearest Siemens partner.

⁵ Maximum 2 nos.can be connected if communication expansion module is not connected.

For exact configuration, contact your nearest Siemens Sales Office.

(B) Software Solution

Description
SETRON powermanager: Complete Energy Management Software

POR: Price On Request

Std. Pkg. = 1 unit

* LP - List Price

PAC 3120: Cost Effective Solution for digital measurement

- Display of instantaneous, maximum and minimum values
- Measurement of Active & Reactive Power (Import / Export / Net)
- CT polarity reversal correction from the device

PAC 3220: Specialist solution for precise energy data capture

- Dual Metering function
- Dual ethernet interface for MODBUS TCP communication
- Optional communication over PROFIBUS DP and PROFINET

PAC 4200: Professional solution for communication and monitoring

- Integrated gateway functionality for MODBUS RTU devices
- Reliable event recording with battery backup
- Sliding window for maximum demand

PAC EXPANSION Modules



7KM PAC 3220



7KM PAC 4200



MODBUS RTU



PROFINET



PROFIBUS DP



I(N), I(Diff), Analog



PAC 4DI/2DO





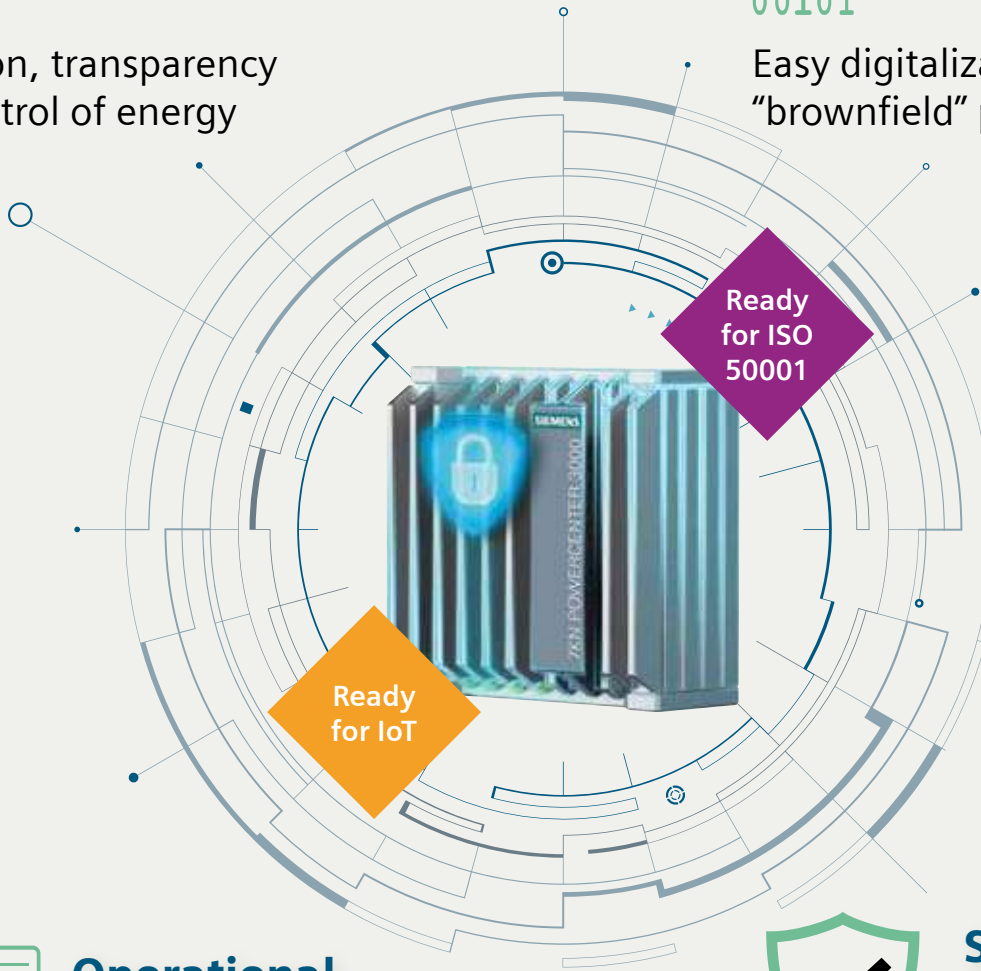
Energy management

Detection, transparency and control of energy flows

101 0
1 11101
0011011
10101
00101

Adaptability to Industry 4.0

Easy digitalization of "brownfield" projects



Ready for ISO 50001

Ready for IoT



Operational flexibility

Choice of visualization via Web Interface, on premise or connect to Cloud



Safety through reliability

Identifying potential outages at an early stage enable preventing them

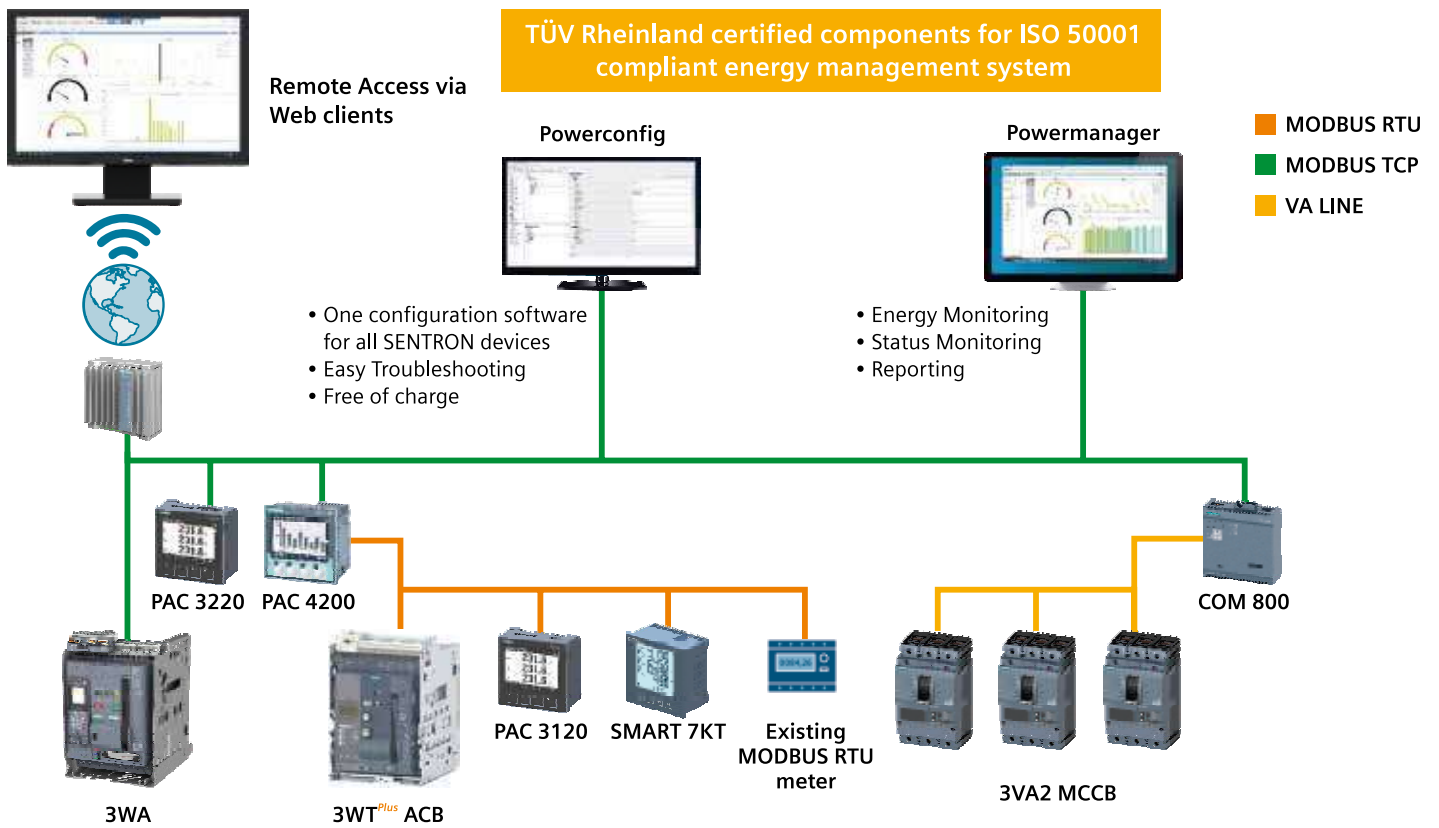
SENTRON Powercenter 3000

Gateway to the digitalization of low-voltage power distribution

Siemens/SENTRON-Digitalization

SIEMENS

Single Platform For Intelligent Power Distribution Management



Energy Management System



Power Quality Measurement

SENTRON 7KM PAC 5200

- Measured value capture in accordance with power quality standard IEC 61000-4-30
- Recording of power quality anomalies like sag, swell and interruption
- Integrated web server to set parameters and display measured values on HTML pages

For more details, contact your nearest Siemens partner.

www.siemens.com/powermonitoring

DIN Rail Mounted Meters for energy monitoring in Infra and Building Applications

Description	Type
PAC 2200 DIN rail meter with integrated RS 485 port for MODBUS RTU 65A direct connection Class 1 accuracy	7KM2200-2EA40-1DA1
PAC 2200 DIN rail meter with integrated ethernet port for MODBUS TCP 65A direct connection Class 1 accuracy	7KM2200-2EA40-1EA1
PAC3200T DIN rail meter with integrated ethernet port for MODBUS TCP High accuracy of class 0.5 Without display	7KM3200-0CA01-1AA0

POR: Price On Request

Std. Pkg. = 1 unit

* LP - List Price

PAC 2200 and PAC 3200T:

Reliable and Easy energy monitoring for DIN rail Applications

- Compact design on standard mounting rail
- Integrated digital input (DI) and Digital output (DO)
- Integrated web server
- Neutral conductor current display
- THD Measurement



Energy Management System

SENTRON 7KT PAC 1600 DIN Rail mounted compact Energy Meters

- PAC 1600 range of single phase and three phase meters
- Space saving mounting by very slim construction
- Energy counters for active, reactive and apparent energy
- THD: Up to 15th harmonics

www.siemens.com/powermonitoring



7KT PAC1200

Multichannel current measuring system for flexible multichannel monitoring in final distribution

Current Sensors

- Versions: 40 A, 63 A

Sensor Bar

- Versions available for 3, 6, 9, 12

Data Manager

- Connection of up to 96 sensors (40A/63A)
- DIN rail installation (4MW)

Communication/ Software:

- Modbus TCP/ IP
- Simple system onfiguration via web server
- Easy access to energy data with mobile app (iOS/Android)

*For more details, please contact your nearest Siemens Sales Office

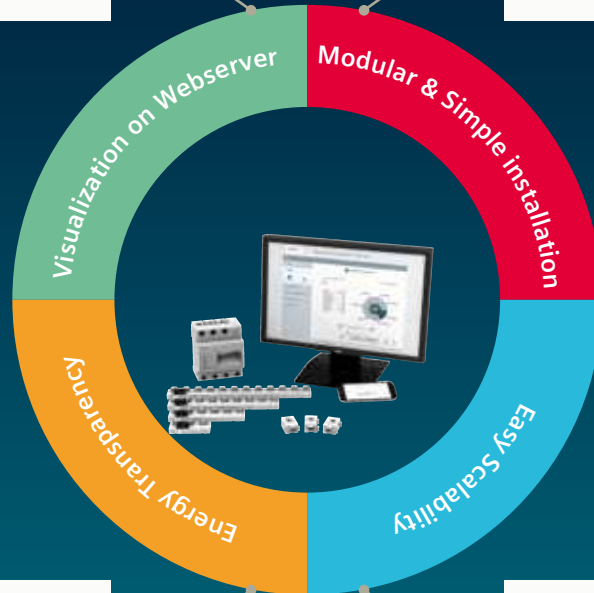
www.siemens.com/powermonitoring

SIEMENS

- Modbus TCP/IP communication
- Simple configuration of system via powerconfig and web server
- Visualization of consumption via Webserver and Mobile App (Android /iOS)

- Flexible sensor bars and current sensors to record up to 96 circuits in one system
- Current sensors simply plug onto the sensor bars, eliminating extensive wiring

fast



plug
and
play

- Targeted detection of power guzzlers
- Simultaneous display of power consumption and costs
- Ensures optimal power monitoring

- Easy to Upgrade
- Scale up the system without any interruption or cumbersome wiring



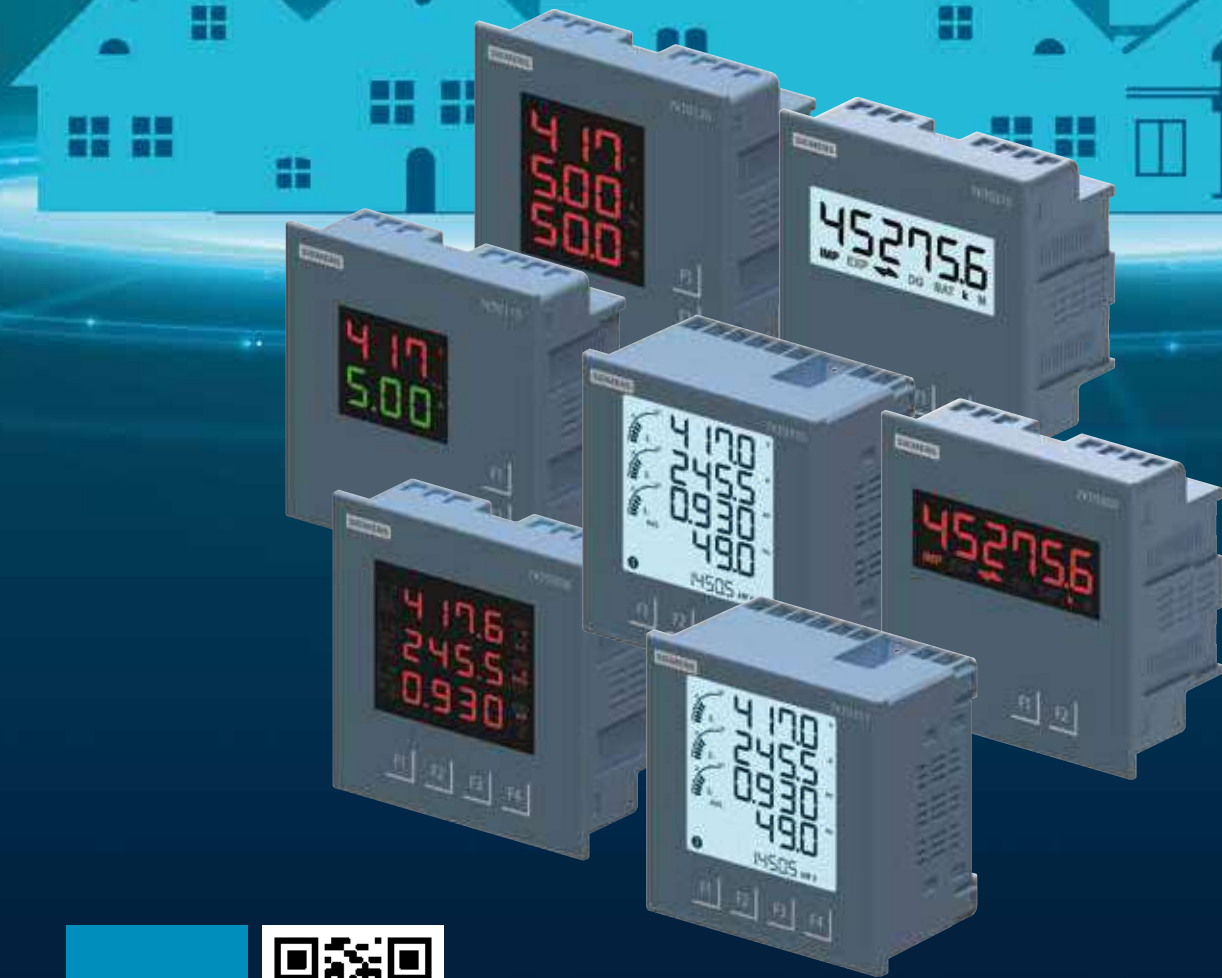
Easy



Transparent



Cost-efficient



for more
info scan
QR code



SMART 7KT

Power Monitoring Devices

Expanding the reach of technology

SIEMENS

SMART 7KT

NEW

Power Monitoring Devices

SMART 7KT Discrete Panel Meter

Accurate and easy visualization for all the basic measurements

- Tested accuracy as per IEC 61557-12 and IEC 62053
- RoHS compliant
- Modern aesthetics with soft touch keys
- Large LED (multicolored) display for easy visualization



Description	Type
VAF meter NEW	7KT0120
VA meter NEW	7KT0110
3 phase energy meter *	7KT0210

*Please contact your nearest Siemens Sales office for more details.

SMART 7KT Multi Function Meter

Broad range of uses in industry and infrastructure

- Tested accuracy as per IEC 61557-12 and IEC 62053
- RoHS compliant
- Graphical representation of current loading in the LCD display meters
- Modern aesthetics with soft touch keys
- Integrated Modbus RTU communication over RS 485
- Measurement of 30+ electrical parameters



Description	Type
LCD Class 0.5s NEW	7KT0311
LCD Class 1	7KT0310
Multi-line LED Class 1 NEW	7KT0308
Single-line LED Class 1 NEW	7KT0307

Power Monitoring Devices



for more info scan QR code